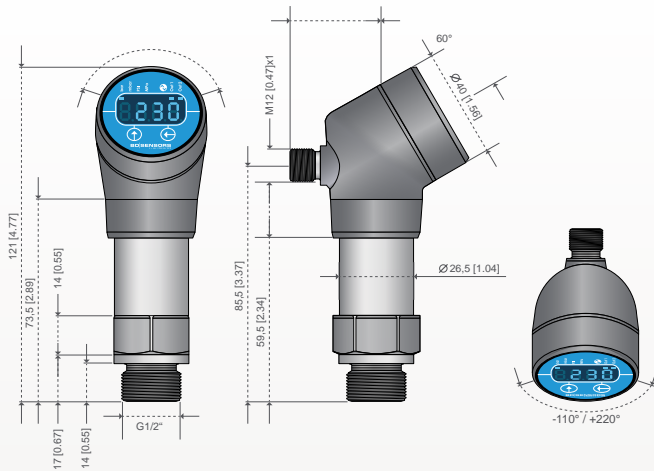
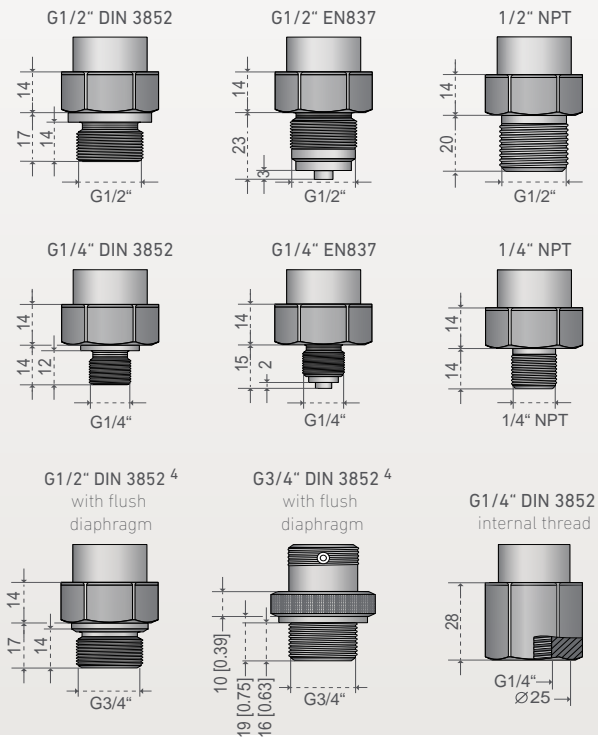


DIMENSIONS

DS 350 - ELECTRONICAL PRESSURE SWITCH



DS 350 - PRESSURE PORTS



TALK TO US!

We will be happy to advise you.

PRESSURE SWITCH WITH IO-LINK SERIES DS 35x



RELIABLE SWITCHING INDIVIDUAL CONFIGURATION



OUR DAY-TO-DAY BUSINESS.

BD | SENSORS GmbH

BD-Sensors-Str. 1
D-95199 Thierstein
Tel.: +49 9235 9811-0
Fax: +49 9235 9811-11
info@bdsensors.de

www.bdsensors.de



BD | SENSORS
pressure measurement

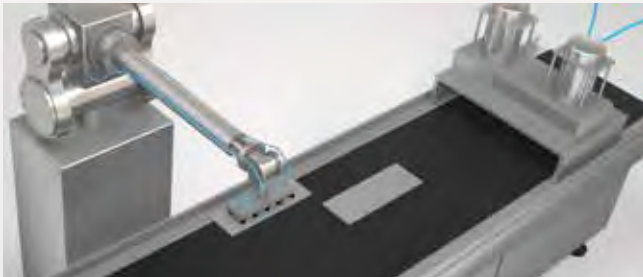
DS 350 AT A GLANCE

The DS 350 is an electronic pressure switch with an IO-Link interface. It is designed for recording system pressures of gaseous and liquid media in the mechanical engineering and plant engineering sectors, in automation and in hydraulic and pneumatic applications. The IO-Link interface is used, for example, for parametrization, measured values are sent to the control system and a sensor can be exchanged simply through plug-and-play. The settings of the exchanged device are automatically adopted from the IO-Link master.

Areas of application

- > machine tools
- > pneumatic installations
- > hydraulic units

Pressure monitoring for vacuum lifters

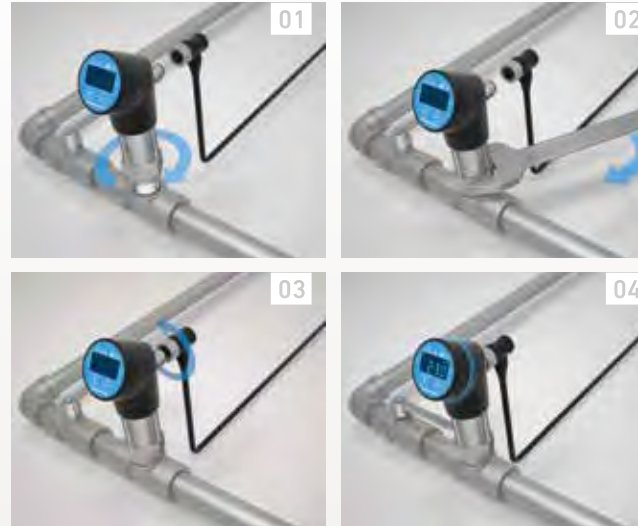


Controlling the changeover points during punching and pressing



FLEXIBLE INSTALLATION

The display head is variably rotatable after tightening the sensor. This allows high flexibility for various installation positions.



Ergonomic - rotation of the display



TECHNICAL DATA

Nominal pressure

- > from 0 ... 100 mbar up to 0 ... 600 bar

Accuracy

- > 0,5% FSO (optional 0,35% | 0,25%)

Digital output signal

- > IO-Link according to specification V 1.1
- > Smart Sensor Profile
- > Data transfer 38,4 kBit/s

Switchable signal output

- > PNP | NPN | 4 ... 20 mA | 0 ... 10 V

User friendly operation

- > Parametrization by IO-Link or menu system (VDMA conform)
- > Additional information accessible via IO-Link

Further versions

- > DS 351 with ceramic sensor und PVDF pressure port for usage in aggressive media
- > DS 350P mit flush process connection in hygienic design

