



CIT 700 / 750

Multichannel Process Display with Datalogger, Contacts and Analogue Outputs

Functional range

- ▶ up to 90 channels for in- / outputs
- ▶ 35 mathematical / logical functions
- ▶ 8 integrated PID-controllers with autotuning
- ▶ 8 time- / event-driven profiles
- ▶ touchscreen- and remote-controlling
- ▶ multilevel access system
- ▶ webserver incl. HTML5 widgets
- ▶ e-mail function

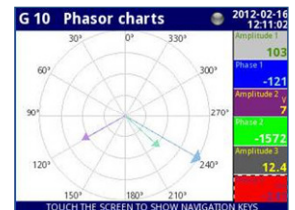
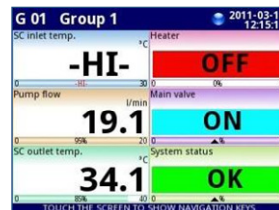
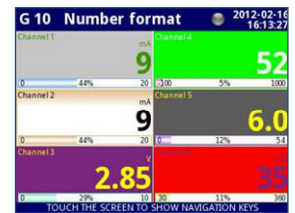
Datalogger

- ▶ data acquisition of up to 60 channels
- ▶ 2 configurable sample rates (max. 10 Hz)
- ▶ extensive triggering functions
- ▶ internal memory 1.5 GB
- ▶ data transfer via USB memory stick or Ethernet

Product characteristics

- ▶ front panel housing 96 x 96 / 144 x 144mm
- ▶ graphic TFT monitor, touchscreen
- ▶ 3 slots for 40 different input- / output modules
- ▶ interfaces: RS-485 (Modbus RTU), RS-232, USB-Host, Ethernet (Modbus TCP)
- ▶ transducer power supply 24 V_{DC}

Display modes


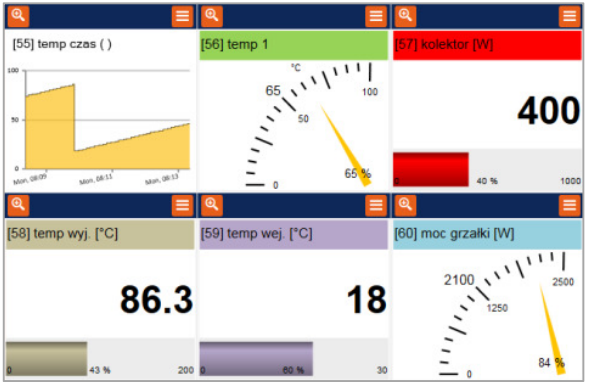
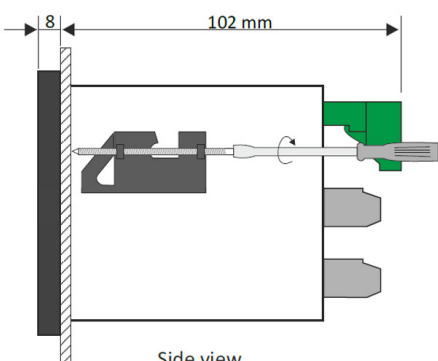
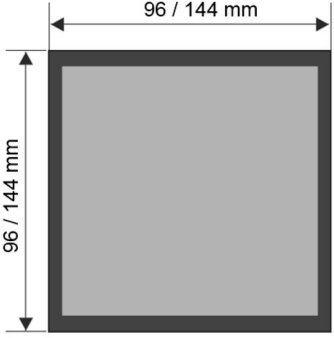
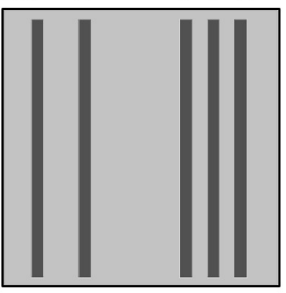


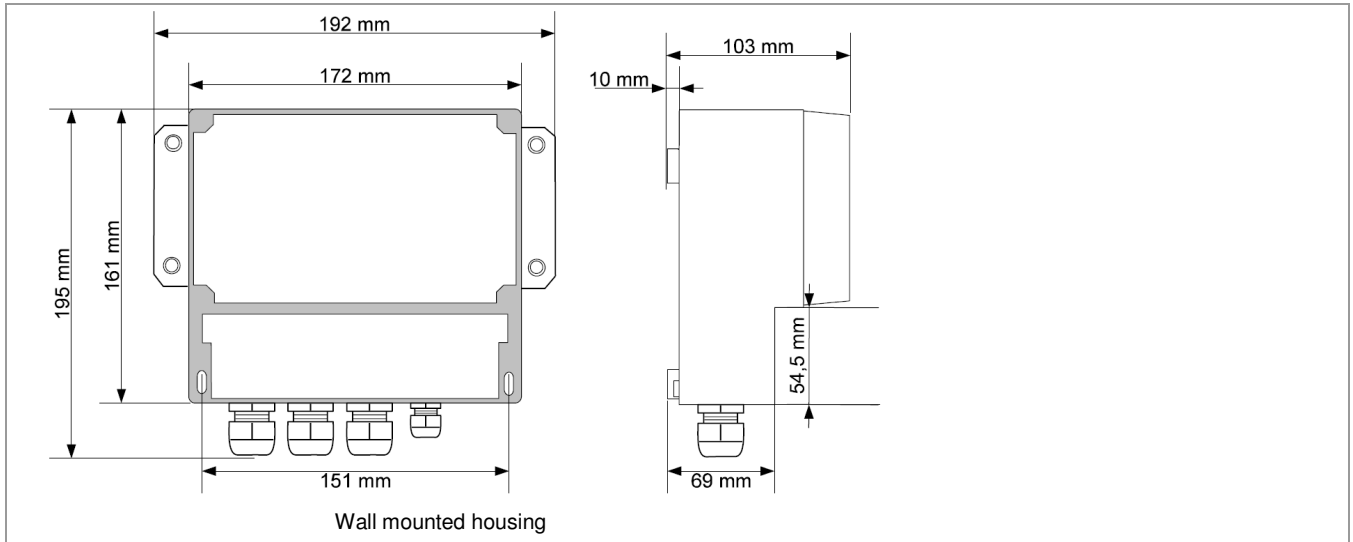
Modbus

CIT 700 / 750

Multichannel Process Display

Technical Data

Display		
Display	CIT 700: graphic TFT, 3,5", touchscreen, colored (16 bit), 320 x 240 pixels CIT 750: graphic TFT, 5,7", touchscreen, colored (16 bit), 320 x 240 pixels	
Datalogger		
Internal memory	1,5 GB, max. 125 000 000 measurements	
Sampling rate	0,1 sec to 24 h, 2 sampling rates, triggering internal/external, (max. 60 channels, max. 200/sec)	
Ingress protection		
Front panel housing	IP 65 (front side), IP20 (case and connectors) IP 65 (front side with additional sealing frame for panel cut-out), IP 20 (case and connectors) IP 40 (front side, USB front), IP20 (case and connectors)	
Wall mounted housing	IP 65	
Permissible temperatures		
Standard / Option	environment: 0 ... 50 °C, storage: -10 ... 70 °C / environment: -20 ... 50 °C, storage: -20 ... 70 °C	
Electrical protection		
Electrical safety / EMC / CE	EN 61010-1 / EN 61326-1 / 2014/30/EU	
Housing		
Housing type / dimensions	CIT 700: front panel mounting / 96 x 96 x 110 mm CIT 750: front panel mounting / 141 x 141 x 110 mm	CIT 700: wall mounted housing / 166 x 161 x 103mm
Material	NORYL-GFN2S E1	ABS, PC
Weight	CIT 700: max. ca. 800 g CIT 750: max. ca. 1200 g	max. ca. 1000 g
Basic functions		
Allocation of 60 / 90 internal channels to 10 / 15 groups (max. 6 channels each group)		
Visualisation of values in 6 different modes (value, chart, bar, needle, phase chart, ScadaLite)		
Displaying of values numeric (figure) / binary (text) / time / control element (switch / button)		
Lo / Hi alarms, channel highlight (change of background color)		
Filtering (damping / peak detection), scaling (linear / user defined with 20 points), rounding of displayed values		
Extensive mathematic / trigonometric / logical functions		
8 PD- / PI- / PID controller incl. autotuning		
8 user defined time- / event-driven profiles with max. 99 segments		
16 virtual relays, acoustic signal		
Multilingual menu (EN, DE, FR, ES, CZ, PL, HU, RO, RU)		
Date- and time display, time zones, synchronization via NTP		
Adjustable contrast and brightness of display, screen saver, automatic view change, remote shutdown		
Multilevel access system (max. 16 user with definable rights), login via USB dongle		
Editors for letters, figures, special characters, font- and background colors		
Remote control		HTML5 Widgets
		
Dimensions		
 <p>Side view</p>	 <p>Case dimensions</p>	 <p>Backside view</p>



Slot P – power supply modules with basic functions

PS32, PS42

Supply voltage / Power consumption	16 ... 35 V _{AC} / 19 ... 50 V _{DC} / max. 35 VA 85 ... 260 V _{AC} / V _{DC} / max. 35 W
Transducer supply	24 V _{DC} ± 5%, max. 200 mA
Binary input	0 ... 24 V DC, U < 1 V = LOW, U > 8 V = HIGH, current consumption 7,5mA @ 24V, isolation 500 V DC
RS-485	RS-485 Modbus RTU (master/slave), 8N1, 8N2, 8E1, 8E2, 8O1, 8O2, 1200...115200 bit/s
USB type Mini-B	service port

Slot D – communication modules

USB

Interface	USB host port type A
Max. current output	100 mA
Baudrate	12 Mbit/s

ETU

Interface	USB host port type A	Ethernet RJ-45
Max. current output	100 mA	-
Baudrate/protocol	12 Mbit/s	10 Mbit/s, Modbus TCP (slave)

ACM

Interface	USB host port	Ethernet RJ-45	RS-485, RS-485 / RS-232
Max. current output	100 mA	-	-
Baudrate/protocol	12 Mbit/s	10 Mbit/s, Modbus TCP(slave)	1200...115200bit/s, Modbus RTU(master/slave)

ETE

Interface	Ethernet RJ-45
Max. current output	-
Baudrate/protocol	10 Mbit/s, Modbus TCP (slave)

ETR

Interface	Ethernet RJ-45	RS-485
Max. current output	-	-
Baudrate/protocol	10 Mbit/s, Modbus TCP (slave)	1200...115200bit/s, Modbus RTU master/slave)

SLOT C / B / A – input / output modules

UI4, UI8, UI12, UI16, U24, I16, I24 – 4 / 8 / 12 / 16 / 24 current- / voltage inputs (common ground)

Input range/resolution	0 ... 12 V / 1 mV	0 ... 24 mA / 1 µA
Measurement ranges	0 ... 5 V, 1 ... 5 V, 0 ... 10 V, 2 ... 10 V	0 ... 20 mA, 4 ... 20 mA
Accuracy	0,1 % @ 25°C, stability: 50 ppm/°C	0,1 % @ 25°C, stability: 50 ppm/°C
Internal impedance	50 kΩ	100 Ω, 50 mA fuse

IS6 – 6 current inputs (isolated)

Input range/resolution	3 ... 30 mA / 1µA
Measurement ranges	4 ... 20 mA
Accuracy	0,25 % @25°C, stability: 65 ppm/°C
Internal impedance	1750 Ω @ 4 mA, 400 Ω @ 20 mA, 50 mA fuse

D8, D16, D24 – 8 / 16 / 24 binary inputs (common ground each 4 inputs)

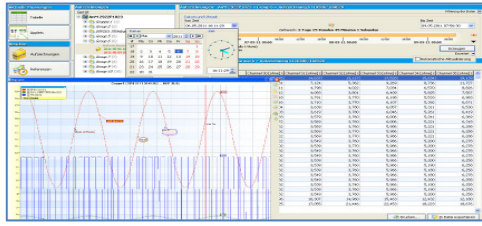


Input range	0 ... 30 V, U < 1 V = LOW, U > 4 V = HIGH
Current consumption	15 mA (24 V), 5 mA (10 V), 2 mA (5 V)

UI4D8, UI8D8 – 4 / 8 current- / voltage inputs + 8 binary inputs (common ground each 4 inputs)

Technical data see UI4, UI8, D8

UI4N8, UI8N8 – 4 / 8 current- / voltage inputs (common ground) + 8 NTC inputs			
Input range/resolution	0 ... 12 V / 1 mV	0 ... 24 mA / 1 μ A	0 ... 110 k Ω / 4 Ω
Measurement ranges	0/1 ... 5 V, 0/2 ... 10 V	0 ... 20 mA, 4 ... 20 mA	0 ... 110 k Ω
Accuracy	0,1 % @25°C, stability: 50 ppm/°C		
Internal impedance	61 k Ω	100 Ω , 50 mA fuse	121 k Ω
RT4, RT6 – 4 / 6 RTD inputs			
Input range/resolution	0 ... 325 Ω / 0,01 Ω		0 ... 3250 Ω / 0,1 Ω
Measurement ranges	-100 ... 600 °C (Pt100), -200 ... 600 °C (Pt'50/100), -50 ... 200 °C (Cu50/100), -200 ... 200 °C (Cu'50/100), -60 ... 180 °C (Ni100), 0...300 Ω , 2/3/4-wire		-100 ... 600 °C (Pt500/1000), -200 ... 600 °C (Pt'500), -60 ... 180 °C (Ni1000), 0...3 k Ω , 2/3/4-wire
Accuracy ¹	0,1 % @25°C, stability 50 ppm/°C		
Internal impedance	4 k Ω		4 k Ω
TC4, TC8, TC12 – 4 / 8 / 12 thermocouple inputs			
Input range/resolution	-30...30mV / 1 μ V		-120...120 mV / 4 μ V
Measurement ranges	-50 ... 1768 °C (S), -200 ... 400 °C (T), -50 ... 1768 °C (R), 250 ... 1820 °C (B), -25...25 mV		-200 ... 1370 °C (K), -210 ... 1200 °C (J), -200 ... 1300 °C (N), -200 ... 1000 °C (E), -200 ... 800 °C (L), 50 ... 2290 °C (C), -100...100 mV
Accuracy ¹	0,15 % @25°C, stability 50 ppm/°C		0,1 % @25°C, stability 50 ppm/°C
Internal impedance	6 M Ω		6 M Ω
¹ accuracy of temperature measurement: see manual			
UN3, UN5 – 3 / 5 universal inputs (isolated) for current, voltage, RTD, thermocouple			
Current inputs			
Input range/resolution	-2 ... 30 mA / 1 μ A		
Measurement ranges	0 ... 20 mA, 4 ... 20 mA		
Accuracy	0,1 % @ 25 °C, stability 50 ppm/°C		
Internal impedance	< 65 Ω		
Voltage inputs			
Input range/resolution	-1 ... 12 V / 1 mV	-15 ... 30 mV / 2 μ V	-15 ... 120 mV / 4 μ V
Measurement ranges	0/1 ... 5 V, 0/2 ... 10 V	-10 ... 25 mV	-10 ... 100 mV
Accuracy	0,1 % @ 25 °C, stability 50 ppm/°C, (-10 ... 25 mV: 0,15 % @ 25 °C)		
Internal impedance	> 100 k Ω	> 100 k Ω	> 100 k Ω
RTD inputs			
Input range/resolution	0...325 Ω / 0,01 Ω		0...3250 Ω / 0,2 Ω
Measurement ranges	-100 ... 600 °C (Pt100), -200 ... 600 °C (Pt'50/100), -50 ... 200 °C (Cu50/100), -200 ... 200 °C (Cu'50/100), -60 ... 180 °C (Ni100), 0...300 Ω , 2/3/4-Leiter		-100 ... 600 °C (Pt500/1000), -200 ... 600 °C (Pt'500), -60 ... 180 °C (Ni1000), 0...3 k Ω , 2/3/4-Leiter
Accuracy ¹	0,1 % @ 25 °C, stability 50 ppm/°C		
Internal impedance	4 k Ω		4 k Ω
Thermocouple inputs			
Input range/resolution	-15 ... 30 mV / 2 μ V		-15 ... 120 mV / 4 μ V
Measurement ranges	-50 ... 1768 °C (S), -200 ... 400 °C (T), -50 ... 1768 °C (R), 250 ... 1820 °C (B)		-200 ... 1370 °C (K), -210 ... 1200 °C (J), -200 ... 1300 °C (N), -200 ... 1000 °C (E), -200 ... 800 °C (L), 50 ... 2290 °C (C)
Accuracy ¹	0,1 % @ 25 °C, stability 50 ppm/°C		0,1 % @ 25 °C, stability 50 ppm/°C
Internal impedance	> 1,5 M Ω		< 65 Ω
HM2, HM4 – 2 / 4 hourmeter inputs (isolated)			
Input range	0 ... 30 V, U < 1 V = LOW, U > 10 V = HIGH		
Current consumption	14 mA (24 V), 6 mA (10 V), 50mA fuse		
Processing	each 1x start-/stop input, 1x programmable input (reset/hold/binary input) counting range: max. 10 ⁹ s		
CP2, CP4 – 2 / 4 universal pulse counters (isolated)			
Input range	0...30V, U<1V = LOW, U>10V = HIGH, max. 10 kHz		
Current consumption/isolation	14 mA (24V), 6 mA (10V), 50mA fuse / 2kV		
Processing	each 2x counting input, 1x programmable input (reset/hold/direction), 1x reset input counting range: 52 bit, counting modes: A+B / A-B / counter (up/down) / quadrature counter		
FI2, FI4 – 2 / 4 analogue flowmeters with totalizer + 2 / 4 current inputs (common ground)			
Input range/resolution	0 ... 24 mA / 1 μ A		
Measurement ranges	0 ... 20 mA, 4 ... 20 mA		
Accuracy	0,1 % @ 25 °C, stability 50 ppm/°C		
Internal impedance	100 Ω / 50 mA fuse		
Processing	each 1x current input (standard + flowmeter), 1x current input (standard), counting range: 10 ¹²		
FT2, FT4 – 2 / 4 pulse flowmeter / ratemeter with totalizer (isolated) + 2 / 4 current inputs (common ground)			
Input range/resolution	0...30V, U<1V = LOW, U>10V = HIGH, max. 50 kHz		-2 ... 30 mA / 1 μ A
Measurement ranges	1/sec, 1/min, 1/h		0 ... 20 mA, 4 ... 20 mA
Accuracy	0,1 % @ 25 °C, stability 50 ppm/°C		
Internal impedance	100 Ω / 50 mA fuse		
Current consumption	12 mA (24V), 50mA fuse		
Processing	each 2x counting inputs + 1x current input, counting range: 10 ¹² , modes: counter (up/down) / quadrature		

FUN2, FUN4 – 2 / 4 universal analogue inputs with flowmeter / totalizer (isolated) for current, voltage, RTD, thermocouple		
Technical data see UN3, UN5		
DU2 – 4 binary inputs (common ground each 2 inputs) or 2 pulse flowmeter / ratemeter with totalizer (isolated)		
Technical data see D8, D16, D24 or FT2, FT4, max. 5kHz		
D4 – 4 binary inputs (common ground each 2 inputs)		
Technical data see D8, D16, D24		
IO2, IO4, IO6, IO8 – 2 / 4 / 6 / 8 passive current outputs 4...20mA (isolated)		
Output range/resolution	3 ... 25 mA, 50 mA fuse / 12 bit	
Accuracy	0,1 % @ 25 °C, stability 50 ppm/°C	
Voltage drop/loop supply	max. 9 V / 9 ... 30 V	
R21, R41, R45, R65, R81, R121 – 2 / 4 / 6 / 8 / 12 relay outputs		
Output	4 / 6 SPDT relay	2 / 4 / 8 / 12 SPST relay
Max. current/voltage	5 A (cosφ =1, each output) / 250 VAC	1A (cosφ =1, each output) / 250 VAC
S2, S4, S8, S16, S24 – 2 / 4 / 8 / 16 / 24 solid state relay outputs (SSR) with PWM		
External supply	Uext. 10 ... 30 V	
Max. current/voltage	100 mA, max. 500 mA each 8 outputs / > Uext. -0,5 V	
PWM-period/-resolution	0,1 ... 1 600 s / 0,1 s	
PWM-frequency/-duty factor	5 kHz (internal), 20 μs (output) / 0 ... 100 %, resolution 15 bit	
R21IO2 – 2 relay outputs + 2 passive current outputs 4...20mA (isolated)		
Technical data see R21, IO2		
R21S2 – 2 relay outputs + 2 solid state relay outputs (SSR) with PWM		
Technical data see R21, S2		
IO2S2 – 2 passive current outputs 4...20mA (isolated) + 2 solid state relay outputs (SSR) with PWM		
Technical data see IO2, S2		

Accessories	
License key for datalogger capabilities Material number LK-700	Activation of datalogger capabilities
License key for e-mail notifications Material number LK-702	Activation of e-mail notifications (Ethernet port required)
Software DAQ-Manager Program for displaying (table or graph), archiving, evaluation and export data stored on CIT 700 with enabled data logging capabilities. Data are imported via USB flash drive or Ethernet. Export of data is performed in CSV format. The program shows current measurements as chart or graphic (Ethernet port required). Material number SW-DAQ	
Lockable door IP 54 for front panel housing Prevents damage of display and increases access protection. 96 mm Material number Z900002 144 mm Material number Z900025	
Mini USB Stick 8 GB Enables transfer of logged data and configuration to a PC (even with mounted front door). Material number Z900024	

Ordering code CIT 700 / 750 panel housing

CIT - - - - - -

Basic version							
	TFT display 3,5"	7	0	0			
	TFT display 5,7" ¹	7	5	0			
Slot P							
	Supply 19..50 VDC, 16...35 VAC						
	Output 24 VDC 200 mA	P	S	3	2		
	Digital input 24 VDC, RS-485 Modbus RTU						
	Supply 85..260 VAC/DC						
	Output 24 VDC 200 mA	P	S	4	2		
	Digital input 24 VDC, RS-485 Modbus RTU						
Slot D							
	empty				E		
	rear USB host port				U	S	B
	rear USB host port						
	Ethernet 10 Mbit/s				E	T	U
	Rear USB host port						
	Ethernet 10 Mbit/s, RS-485 Modbus RTU				A	C	M
	RS-485 Modbus RTU / RS-232						
Slot C / B / A		SLOT C	SLOT B	SLOT A			
	empty	E	E	E			
	16x current input (I)	I 1 6	I 1 6	I 1 6			
	24x current input (I)	I 2 4 ¹	I 2 4 ¹	I 2 4 ¹			
	6x current input (isolated)	I S 6	I S 6	I S 6			
	16x voltage input (U)	U 1 6	U 1 6	U 1 6			
	24x voltage input (U)	U 2 4 ¹	U 2 4 ¹	U 2 4 ¹			
	4x U + 4x I input	U I 4	U I 4	U I 4			
	8x U + 8x I input	U I 8	U I 8	U I 8			
	12x U + 12x I input	U I 1 2 ¹	U I 1 2 ¹	U I 1 2 ¹			
	8x binary input (D)	D 8	D 8	D 8			
	16x binary input (D)	D 1 6	D 1 6	D 1 6			
	24x binary input (D)	D 2 4 ¹	D 2 4 ¹	D 2 4 ¹			
	4x U + 4x I + 8x D input	U I 4 D 8	U I 4 D 8	U I 4 D 8			
	8x U + 8x I + 8x D input	U I 8 D 8 ¹	U I 8 D 8 ¹	U I 8 D 8 ¹			
	4x U + 4x I + 8x NTC input	U I 4 N 8	U I 4 N 8	U I 4 N 8			
	8x U + 8x I + 8x NTC input	U I 8 N 8 ¹	U I 8 N 8 ¹	U I 8 N 8 ¹			
	4x resistance thermometer input (RTD)	R T 4	R T 4	R T 4			
	6x resistance thermometer input (RTD)	R T 6 ¹	R T 6 ¹	R T 6 ¹			
	4x thermocouple input (TC)	T C 4	T C 4	T C 4			
	8x thermocouple input (TC)	T C 8	T C 8	T C 8			
	12x thermocouple input (TC)	T C 1 2 ¹	T C 1 2 ¹	T C 1 2 ¹			
	3x universal input (I, U, RTD, TC)	U N 3	U N 3	U N 3			
	5x universal input (I, U, RTD, TC)	U N 5 ¹	U N 5 ¹	U N 5 ¹			
	2x time counter input	H M 2	H M 2	H M 2			
	4x time counter input	H M 4	H M 4	H M 4			
	2x pulse counter input	C P 2	C P 2	C P 2			
	4x pulse counter input	C P 4	C P 4	C P 4			
	2x flowmeter + 2x I input	F I 2	F I 2	F I 2			
	4x flowmeter + 4x I input	F I 4	F I 4	F I 4			
	2x ratemeter + 2x I-input	F T 2	F T 2	F T 2			
	4x ratemeter + 4x I-input	F T 4	F T 4	F T 4			
	2x current output	I O 2	I O 2	I O 2			¹
	4x current output	I O 4	I O 4	I O 4			¹
	6x current output	I O 6 ¹	I O 6 ¹	I O 6 ¹			¹
	8x current output	I O 8 ¹	I O 8 ¹	I O 8 ¹			¹
	8x SPST relay 1A	R 8 1	R 8 1	R 8 1			¹
	12x SPST relay 1A	R 1 2 1 ¹	R 1 2 1 ¹	R 1 2 1 ¹			¹
	4x SPDT relay 5A	R 4 5	R 4 5	R 4 5			¹
	6x SPDT relay 5A	R 6 5 ¹	R 6 5 ¹	R 6 5 ¹			¹
	8x SSR output	S 8	S 8	S 8			
	16x SSR output	S 1 6	S 1 6	S 1 6			
	24x SSR output	S 2 4 ¹	S 2 4 ¹	S 2 4 ¹			¹
Special version							
	standard ²						0 0 0
	sealing frame IP65 ²						0 1 0
	front USB host port						0 B 0
	operating temperature -20°C...50°C						0 8 0
	sealing frame IP65 + -20...50°C ²						0 P 0
	front USB host port + -20...50°C						0 K 0
	customer						9 9 9
							consult
							consult
							consult

¹ not with TFT display 3,5"
² only with rear USB host port

© 2019 BD|SENSORS GmbH - The specifications given in this document represent the state of engineering at the time of publishing. We reserve the right to make modifications to the specifications and materials.



Ordering code CIT 700 wall mounted housing

CIT - - - - - -

Basic version							
	TFT display 3,5"	7	0	0			
Slot P							
	Supply 19..50 VDC, 16...35 VAC						
	Output 24 VDC 200 mA	P	S	3	2		
	Digital input 24 VDC, RS-485 Modbus RTU						
	Supply 85..260 VAC/DC						
	Output 24 VDC 200 mA	P	S	4	2		
	Digital input 24 VDC, RS-485 Modbus RTU						
Slot D							
	empty						
	Ethernet 10 Mbit/s				E	T	E
	Ethernet 10 Mbit/s				E	T	R
	RS-485 Modbus RTU						
Slot C / B / A		SLOT C	SLOT B	SLOT A			
	2x universal / flowmeter input (I, U, RTD, TC)				F	U	N 2
	4x universal / flowmeter input (I, U, RTD, TC)				F	U	N 4
	2x pulse counter/ratometer / 4x binary input				D	U	2
	4x binary input				D	4	
	2x SPST relay 1A	R	2	1			
	4x SPST relay 1A	R	4	1			
	2x current output	I	O	2			
	4x current output	I	O	4			
	2x SSR output	S	2				
	4x SSR output	S	4				
	2x SPST relay 1A + 2x current output	R	2	1	I	O	2
	2x SPST relay 1A + 2x SSR output	R	2	1	S	2	
	2x current output + 2x SSR output	I	O	2	S	2	
Special version							
	USB + Wall mounted housing IP65					5	B 0
	USB + wall mounted housing IP65 + -20...50°C					5	K 0 auf Anfrage
	customer					9	9 9 auf Anfrage

Accessories			
	licence key datalogger		LK-700
	licence key e-mail notifications		LK-702
	lockable, transparent door 96 x 96 mm		Z900002
	lockable, transparent door 144 x 144 mm		Z900025
	hat rail adapter 96 mm		Z900030
	hat rail adapter 144 mm		Z900031
	software DAQ-manager		SW-DAQ
	mini USB stick 8GB		Z900024