



CIT 600

Multichannel Process Display with Contacts

Functional range

- ▶ data and configuration transfer via USB and RS-485
- ▶ parameterizable alarms for exceeded input range
- ▶ adjustable contrast and brightness of the display
- ▶ software for parameterization

Product characteristics

- ▶ 2/4/8 input channels
- ▶ input 0/4 ... 20 mA + 0/1/2 ... 5/10 V
- ▶ output 2 relays
- ▶ graphic LC display
- ▶ transducer power supply 24 V_{DC}
- ▶ interface RS-485 (Modbus RTU)
- ▶ front panel housing 96 x 96 mm

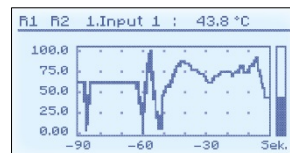
Optional versions

- ▶ input Pt100/500/1000
- ▶ input thermocouples

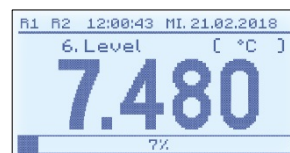
Display modes

R1	R2	12:02:28	MI. 21.02.2018
1.	Input 1	48.5	°C
2.	Input 2	7.417	mA
3.	Input 3	<<10000	mV
4.	Input 4	38.6	l/min
5.	Input 5	105	°F
6.	Input 6	30.0	%
7.	Input 7	1.00	bar
8.	Input 8	10.2	mWs

- ▶ simultaneous display of max. eight channels with scaled value or standardized value and bargraph



- ▶ chart display of one channel with scaled value and bargraph






- ▶ single channel display with scaled value, standardized value and bargraph



Modbus

Supply	
Supply voltage / power consumption	85 ... 260 V _{AC} / V _{DC} / max. 12 W 16 ... 35 V _{AC} / 19 ... 50 V _{DC} / max. 12 VA
Transducer supply ¹	24 V _{DC} + 5%, - 10%, max. 200 mA
¹ Transducer supply 24V _{DC} only for current/voltage inputs	
Signal input	
Quantity	2, 4 or 8 inputs
Input signal	0/4 ... 20 mA, 0/1 ... 5 V, 0/2 ... 10 V, common ground Pt100 / Pt500 / Pt1000, 2-/3-wire Thermoelement Typ K, S, J, T, N, R, B, E, 0 ... 60/75/100/150 mV
Accuracy (25 °C)	± 0,1 % FSO, ± 0,2% FSO (TC N), ± 0,5 % FSO (TC S, T, R, B), stability: 50 ppm/°C
Contacts	
Contact	2 el. relays, max. 35 V _{DC} / 24 V _{AC} , max. 200 mA
Display	
Display	graphic LCD (graph max. 8h), black/white, 128 x 64 points, with backlight
Display range	0/4 ... 20 mA, 0/1 ... 5 V, 0/2 ... 10 V: - 9999 ... 9999 + decimal point Pt100 / Pt500 / Pt1000: -100, 0 ... 600,0°C thermocouple: -200 ... 1370 °C(K), -50 ... 1768 °C(S, R), -210 ... 1200 °C(J), -200 ... 400 °C(T), -200 ... 1300 °C(N), 250 ... 1820 °C(B), -200 ... 1000 °C(E)
Communication	
Communication interface	RS-485 (Modbus RTU), 8N1, 1200 – 115200 bit/s, USB PC (Mini-B)
Ingress protection	
Standard	IP 65 (front side), IP20 (case and connectors)
Option	IP 65 (front side with additional sealing frame for panel cut-out), IP 20 (case and connectors)
Permissible temperatures	
Standard	environment: 0 ... 50 °C, storage: -10 ... 70 °C
Option	environment: -20 ... 50 °C, storage: -20 ... 70 °C
Electrical protection	
Electrical safety	EN 61010-1
EMC	EN 61326-1
CE-conformity	EMC Directive: 2014/30/EU
Housing	
Housing type / dimensions	front panel mounting / 96 x 96 x 110 mm
Material	NORYL-GFN2S E1
Weight	approx. 600 g
Dimensions (in mm)	
<p>The image contains three technical drawings of the CIT 600 display. The first drawing is a side view showing the device mounted on a panel. It indicates a panel thickness of 8 mm and a total depth of 102 mm. The second drawing shows the case dimensions as a square with 96 mm on both sides. The third drawing shows the panel cut-out dimensions as a square with 90,5 mm on both sides.</p>	

Software	
<p>S-Toolkit</p> <p>Program for the complete configuration of CIT 600. The data are transferred via USB memory stick or via interface USB PC / RS-485.</p> <p>This software is included in scope of supply.</p>	
Accessories	
<p>Lockable door IP 54 for front panel housing 96 x 96 mm</p> <p>Prevents damage of display and increases access protection.</p> <p>Material number Z900002</p>	
<p>Hat rail adapter for front panel housing 96 mm</p> <p>Enables mounting on a hat rail TS35.</p> <p>Material number Z900030</p>	

© 2019 BD|SENSORS GmbH - The specifications given in this document represent the state of engineering at the time of publishing. We reserve the right to make modifications to the specifications and materials.

Ordering code CIT 600

CIT 600 - - 50 - -

Number of inputs			
	2	2	
	4	4	
	8	8	
Input type			
	0/4 ... 20 mA, 0/1 ... 5 V, 0/2 ... 10 V	8	
	Pt100, Pt500, Pt1000, thermocouple	T	
Number of outputs			
	2	2	
Output type			
	El. relay 200mA	8	
Supply			
	16...35 VAC / 19...50 VDC	3	
	85...260 VAC / VDC	4	
Special version			
	standard	0	0 0
	sealing frame IP65	0	1 0
	operating temperature -20°C...50°C	0	8 0
	IP65 + operating temp. -20...50°C	0	P 0
	customer	9	9 9
			consult

Accessories	
lockable, transparent door 96 x 96 mm ¹	Z900002
hat rail adapter 96 mm	Z900030

¹ not for IP65